

City of Rio Communities,
Resolution 2018-116- A proposal
to participate in the NMDOT
Cooperative Agreement Program
for the expresses purpose of
repairing city roads and
intersections.

2018 – 2019 Road Paving Improvements

**City of Rio Communities,
New Mexico**

Prepared by: Rio Communities'
Planning and Zoning Commission



CITY OF RIO COMMUNITIES

360 Rio Communities Blvd.
PO Box 565
Rio Communities, NM 87002
505-861-6803
www.riocommunities.net

February 13, 2018

Mr. Rick Garza
LGRF Liaison
NMDOT, District 3
PO Box 91750
Albuquerque, New Mexico 87199-1750

RE: 2018-2019 Cooperative Agreement Program Project Proposal

Dear Mr. Garza,

The City of Rio Communities is please to present the following application for funding under the Cooperative Agreement Program for 2018-2019. This proposal was prepared by members of our Planning and Zoning Commission, who conducted the requisite site inspections, and performed a thorough analysis of road use and conditions.

Following are aerial photographs and street views that depict the specific project locations, many of which are located alone established school bus routes; along with each project's scope of work and corresponding cost estimate. Additionally, Resolution 2018-116 is attached certifying full acceptance of this project by our Governing Body.

As mayor, I hereby certify that the enclosed proposed scope of work is necessary for the public good and their convenience, and integral to the economic development of our community.

Should you have further concerns or question, please contact City Manager, Mr. Robert Skerry, at 505-859-1789.

Thank-you in advance for your assistance in our efforts to improve our community.

Sincerely,

Mark Gwinn

Mayor of Rio Communities

**State of New Mexico
City of Rio Communities**

**Resolution 2018-116
NMDOT Cooperative Agreement Program**

Whereas, The governing body in and for the City of Rio Communities, State of New Mexico, desires to participate in the Cooperative Agreement Program and has approved the scope and locations of the work in the attached document; listing roads and intersections, along with a preliminary cost estimate, and;

Whereas, The scope of work contained herein has been reviewed by the City Council as being vital to the public good and their convenience, and;

Whereas, The City of Rio Communities is responding to invitation from the New Mexico Highway and Transportation Department, District Three, Albuquerque, New Mexico, to participate in the 2018-2019 Cooperative Agreement Funding Program by submitting the following project proposal, and;

Whereas, The City of Rio Communities has agreed to provide matching funds at a rate of twenty-five percent (25%) of the total cost of the project.

NOW THEREFORE, BE IT HEREBY RESOLVED that the Governing Body of the City of Rio Communities, State of New Mexico, hereby authorizes the submission of an application to the New Mexico State Highway and Transportation Department, and does hereby commit to the funding of such projects as specified in the application.

APPROVED, PASSED AND ADOPTED BY THE GOVERNING BODY OF THE CITY OF RIO COMMUNITIES ON THIS 13TH DAY OF FEBRUARY 2018.

City of Rio Communities Governing Body

Mark Gwinn, Mayor

Margaret (Peggy) Gutjahr, Councilor/
Mayor Pro Tem

William Brown, Council

Arturo Sais, Councilor

Thomas Scroggins, Councilor

ATTEST: _____
Elizabeth (Lisa) Adair, Municipal Clerk

City of Rio Communities								
2018-2019 Cooperative Agreement Road Repairs								
Road Descriptions, Data & Cost Estimates								
Repair #	Location	Description	Bus Route	Length (FT)	Width (FT)	Area (SF)	Cut/Replace @ \$4.50 per SF	Chip Seal @ \$.55 per SF
1	Basham Ct & Hill	Full length of Basham Ct	Yes	390	30	11,700		\$ 6,440.00
2	Bishop Ct & Hill	Full length of Bishop Ct	Yes	430	30	12,900		\$ 7,100.00
3	Goddard Ct	Full length of Goddard Ct starting east of Hill St	Yes	430	30	12,900	\$ 58,100.00	
4	Horner St	Starting north of Hillandale to Gorman	No	750	30	22,500		\$ 12,380.00
5	*Gorman Ave	East of Horner to Pageant St	Yes	2,500	30	75,000		\$ 41,250.00
5a	*Gorman Ave	Selected areas only as noted in Scope of Work	Yes	770	3	2,310	\$ 10,400.00	
6	Brugg Dr & Recodo Pl	Full intersection	Yes	50	70	3,500	\$ 15,750.00	
7	Horner & Baldwin	East side of intersection	Yes	60	80	4,800	\$ 21,600.00	
8	Don Diego & Guapo Rd	Full intersection	No	100	30	3,000	\$ 13,500.00	
9	Don Diego & Kaghan Lp	Center of intersection	Yes	60	80	4,800	\$ 21,600.00	
10	Brown Dr	Length of center line west of Frederico to Palmer	No	280	30	8,400		\$ 4,620.00
Subtotals							\$ 140,950.00	\$ 71,790.00
Total Project Cost							\$	212,740.00

All values (road dimensions and costs) are rounded up to the nearest 10th
 *Gorman Avenue is a combination repair that involves both chip and seal with fog coating overlay and completed cut and replace of asphalt along specified areas.

Repair #	Location	GPS Coordinates
1	Basham Ct & Hill	34°38'58.9"N 106°42'58.1"W
2	Bishop Ct & Hill	34°39'03.4"N 106°42'58.5"W
3	Goddard Ct	34°39'07.6"N 106°42'55.8"W
4	Horner St	34°39'11.7"N 106°43'24.1"W
5	*Gorman Ave	34°39'24.9"N 106°43'08.1"W
6	Brugg Dr & Recodo Pl	34°38'37.3"N 106°43'10.2"W
7	Horner & Baldwin	34°38'43.0"N 106°43'20.0"W
8	Don Diego & Guapo Rd	34°38'09.5"N 106°43'15.4"W
9	Don Diego & Kaghan Lp	34°38'05.1"N 106°43'05.3"W
10	Brown Dr	34°38'03.1"N 106°43'38.7"W

**City of Rio Communities
Index of Repair Site Locations (2018-2019)**

1. Basham Ct. and Hill St	5
2. Bishop Ct and Hill St	6
3. Goddard Ct and Hill St	7
4. Horner St	8
5. Gorman Ave	9
6. Brugg Dr and Recodo Pl.....	11
7. Horner St and Baldwin Ave	12
8. Don Diego Rd and Guapo Rd	13
9. Don Diego Rd and Kaghan Pl.....	14
10. Brown Dr	15

Repair #1 Basham Ct east of Hill St



North 

Surface

Condition: Fair

Assessment: Moderate to severe raveling with loss of fine and coarse aggregate. Some longitudinal and transverse cracks with evidence of block cracking up to 50% of surface and potholes interspersed throughout.

Repair: Repair potholes and apply 3/8" chip and seal with fog coat overlay over entire length and width of surface.

Area: 11,700 SF

Scope of Work: Potholes and surface faults should be squared and dug to a minimum depth of 3" before filling with premixed bituminous material to correct potholes and patches. Apply liquid asphalt and aggregate (3/8") on full width sections of paved roadways to seal the surface. Apply rejuvenating asphalt emulsion (fog) as a flush coat on paved surfaces to reconstitute and seal road surface.

Repair #2 Bishop Ct east of Hill St



Surface

Condition:

Fair

Assessment:

Moderate to severe raveling with loss of fine and coarse aggregate. Some longitudinal and transverse cracks with evidence of block cracking up to 50% of surface and potholes interspersed throughout.

Repair:

Repair potholes and apply 3/8" chip and seal with fog coat overlay over entire length and width of surface.

Area:

12,900 SF

Scope of Work:

Potholes and surface faults should be squared and dug to a minimum depth of 3" before filling with premixed bituminous material to correct potholes and patches.
Apply liquid asphalt and aggregate (3/8") on full width sections of paved roadways to seal the surface.
Apply rejuvenating asphalt emulsion (fog) as a flush coat on paved surfaces to reconstitute and seal road surface.

Repair #3 Goddard Ct east of Hill St



Surface

Condition:

Poor

Assessment:

Complete breakdown of asphalt and base course

Repair:

Full service repair (cut and replace)

Area:

12,900 SF

Scope of Work:

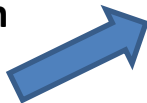
Mark and saw-cut area of repair; jackhammer and remove defective material; remove, replace with compacted base course; apply tack coat; place hot asphalt patch material in two 1.5-inch lifts, compacting after each applied lift; seal with joint sealant material.

Repair #4

Horner St, north of Hillandale Ave to intersection of Grey Pl & Gorman



North



Surface

Condition:

Fair

Assessment:

Moderate to severe raveling with loss of fine and coarse aggregate. Some longitudinal and transverse cracks with evidence of block cracking up to 50% of surface and potholes interspersed throughout.

Repair:

Repair potholes and apply 3/8" chip and seal with fog coat overlay over entire length and width of surface.

Area:

22,500 SF

Scope of Work:

Potholes and surface faults should be squared and dug to a minimum depth of 3" before filling with premixed bituminous material to correct potholes and patches.

Apply liquid asphalt and aggregate (3/8") on full width sections of paved roadways to seal the surface.

Apply rejuvenating asphalt emulsion (fog) as a flush coat on paved surfaces to reconstitute and seal road surface.

Repair #5

Gorman Ave northeast of Horner and Grey, ending at Pageant St



Surface

Condition:

Fair to poor

Assessment:

Moderate to severe raveling with loss of fine and coarse aggregate. Some longitudinal and transverse cracks with evidence of block cracking up to 50% of surface and sever surface breakdown interspersed along approximately 30% of centerline of road.

Repair:

Combination cut and replace asphalt areas especially along centerline of road, and chip and fog seal entire length and width of road.

Area:

75,000 SF

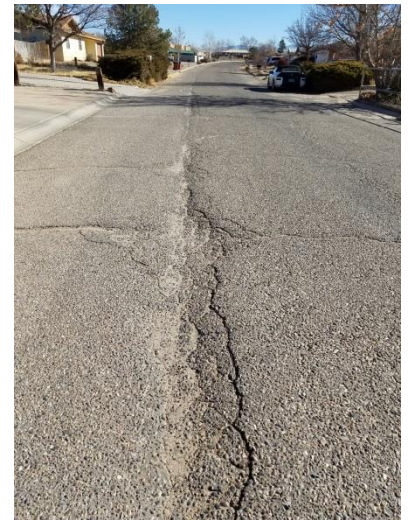
Scope of Work:

Cut and replace areas along centerline: Mark and saw-cut area of repair; jackhammer and remove defective material; remove, replace with compacted base course; apply tack coat; place hot asphalt patch material in two 1.5-inch lifts,

compacting after each applied lift; seal with joint sealant material.

Chip/fog seal length of road: Apply liquid asphalt and aggregate (3/8") on full width sections of paved roadways to seal the surface.

Apply rejuvenating asphalt emulsion (fog) as a flush coat on paved surfaces to reconstitute and seal road surface.



Repair #6
Brugg Dr and Recodo Pl (full intersection)



Surface Condition:	Poor
Assessment:	Complete breakdown of asphalt and base course
Repair:	Cut and replace
Area:	3,500 SF
Scope of Work:	Mark and saw-cut area of repair; jackhammer and remove defective material; remove, replace with compacted base course; apply tack coat; place hot asphalt patch material in two 1.5-inch lifts, compacting after each applied lift; seal with joint sealant material.

Repair #7

Horner and Baldwin (east side of intersection)



North



Surface

Condition:

Poor

Assessment:

Complete breakdown of asphalt and base course

Repair:

Cut and replace

Area:

4,800 SF

Scope of Work:

Mark and saw-cut area of repair; jackhammer and remove defective material; remove, replace with compacted base course; apply tack coat; place hot asphalt patch material in two 1.5-inch lifts, compacting after each applied lift; seal with joint sealant material.

Repair #8
Don Diego Rd and Guapo Rd (full intersection)



Surface

Condition: Poor

Assessment: Complete breakdown of asphalt and base course

Repair: Cut and replace

Area: 2,400 SF

Scope of Work: Mark and saw-cut area of repair; jackhammer and remove defective material; remove, replace with compacted base course; apply tack coat; place hot asphalt patch material in two 1.5-inch lifts, compacting after each applied lift; seal with joint sealant material.

Repair #9

Don Diego Rd and Kaghan Lp (center of intersection)



North



Surface

Condition: Poor

Assessment: Complete breakdown of asphalt and base course

Repair: Cut and replace

Area: 4,800 SF

Scope of Work: Mark and saw-cut area of repair; jackhammer and remove defective material; remove, replace with compacted base course; apply tack coat; place hot asphalt patch material in two 1.5-inch lifts, compacting after each applied lift; seal with joint sealant material.

Repair #10
Brown Dr (west of Frederico to Palmer)



North



Surface

Condition:

Poor

Assessment:

Complete breakdown of asphalt and base course

Repair:

Full service repair and replace

Area:

8,400 SF

Scope of Work:

Mark and saw-cut area of repair; jackhammer and remove defective material; remove, replace with compacted base course; apply tack coat; place hot asphalt patch material in two 1.5-inch lifts, compacting after each applied lift; seal with joint sealant material.