

**STATE OF NEW MEXICO
CITY OF RIO COMMUNITIES
RESOLUTION 2016-68**

Acceptance of Property Transfer from Valley Improvement Association, Inc. (VIA)

- WHEREAS,** The Governing Body in and for the City of Rio Communities, State of New Mexico is duly authorized; and
- WHEREAS,** the Governing Body has determined that the health, safety and welfare of the citizens of Rio Communities would best be served by accepting this generous donation of approximately 12.62 acres from Valley Improvement Association, Inc. (VIA); and
- WHEREAS,** the property is entirely within the City's established boundary of the City of Rio Communities and this property has numerous possibilities to benefit the citizens of Rio Communities and;
- WHEREAS,** the attached Quit Claim Deed Addendum A and Exhibit B attached to said Quit Claim Deed is an accurate property description as recorded with the Valencia County Clerk Office. Also attached Exhibit B City of Rio Communities Zoning Map dated September 17, 2014 showing approximate general location of said property.

NOW THEREFORE, BE IT HEREBY RESOLVED that the governing body of the City of Rio Communities, State of New Mexico, hereby accepts and approves the donation of said property, dated June 28, 2016.

Resolved: In the Regular Board Session this 28th day of June 2016.

City of Rio Communities Governing Body

Mark Gwinn,
Mayor

Margaret (Peggy) Gutjahr,
Councilor Mayor Pro-tem

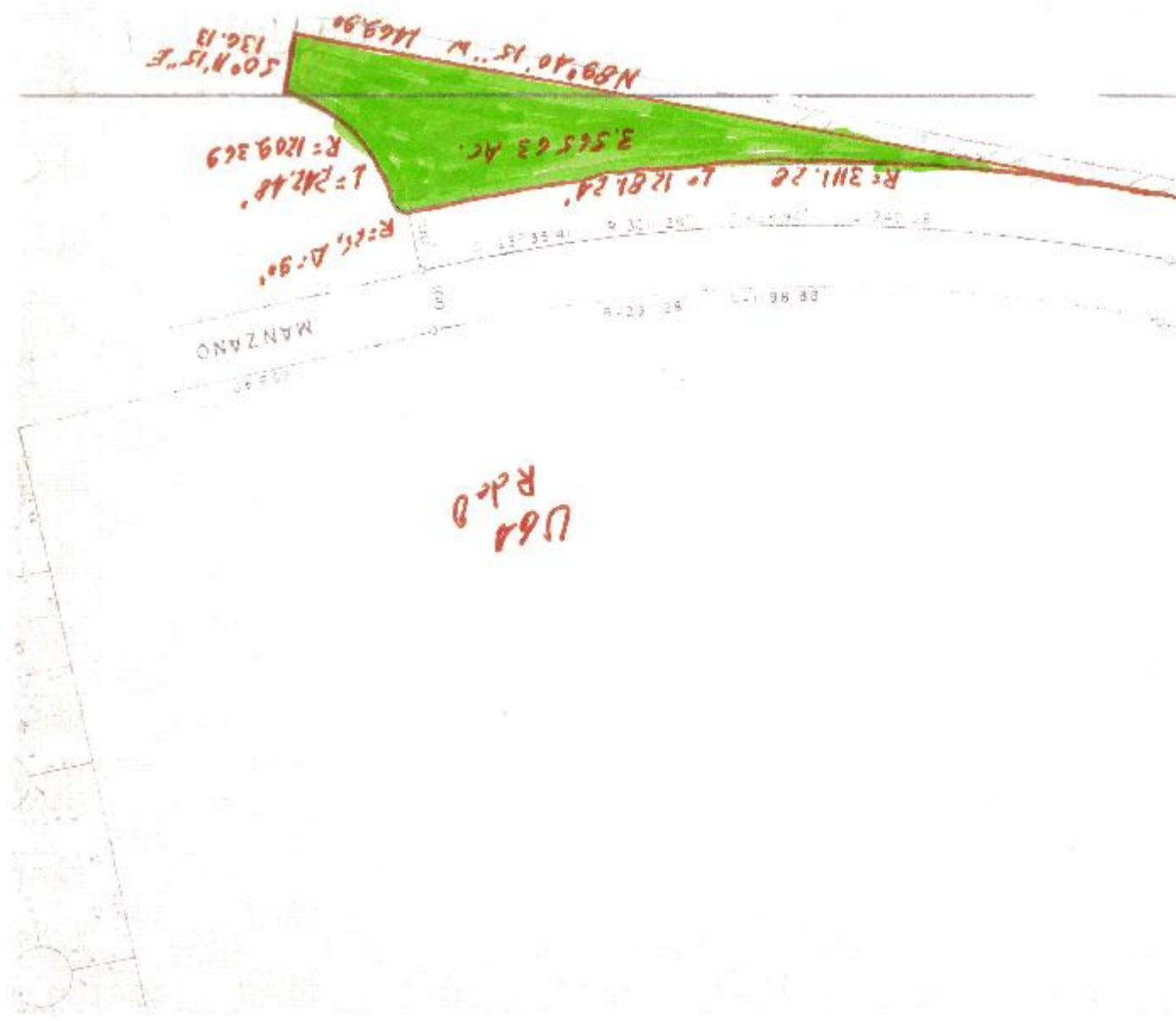
William (Bill) Brown,
Councilor

Arturo R. Sais,
Councilor

Thomas Scroggins,
Councilor

ATTEST:

Elizabeth (Lisa) Adair,
Municipal Clerk



50° N 15° E
136.13

N 89° 40' 15\"

L = 242.48'
R = 1209.369

3.56563 AC.

R = 311.28' L = 1281.24'

R = 6', Δ = 90°

MANZANO

UGA
Rd. 0



AREA	ACRES
NUMBER OF LOTS	107
NUMBER OF SIDING'S	347
WATER C.T.	1.17

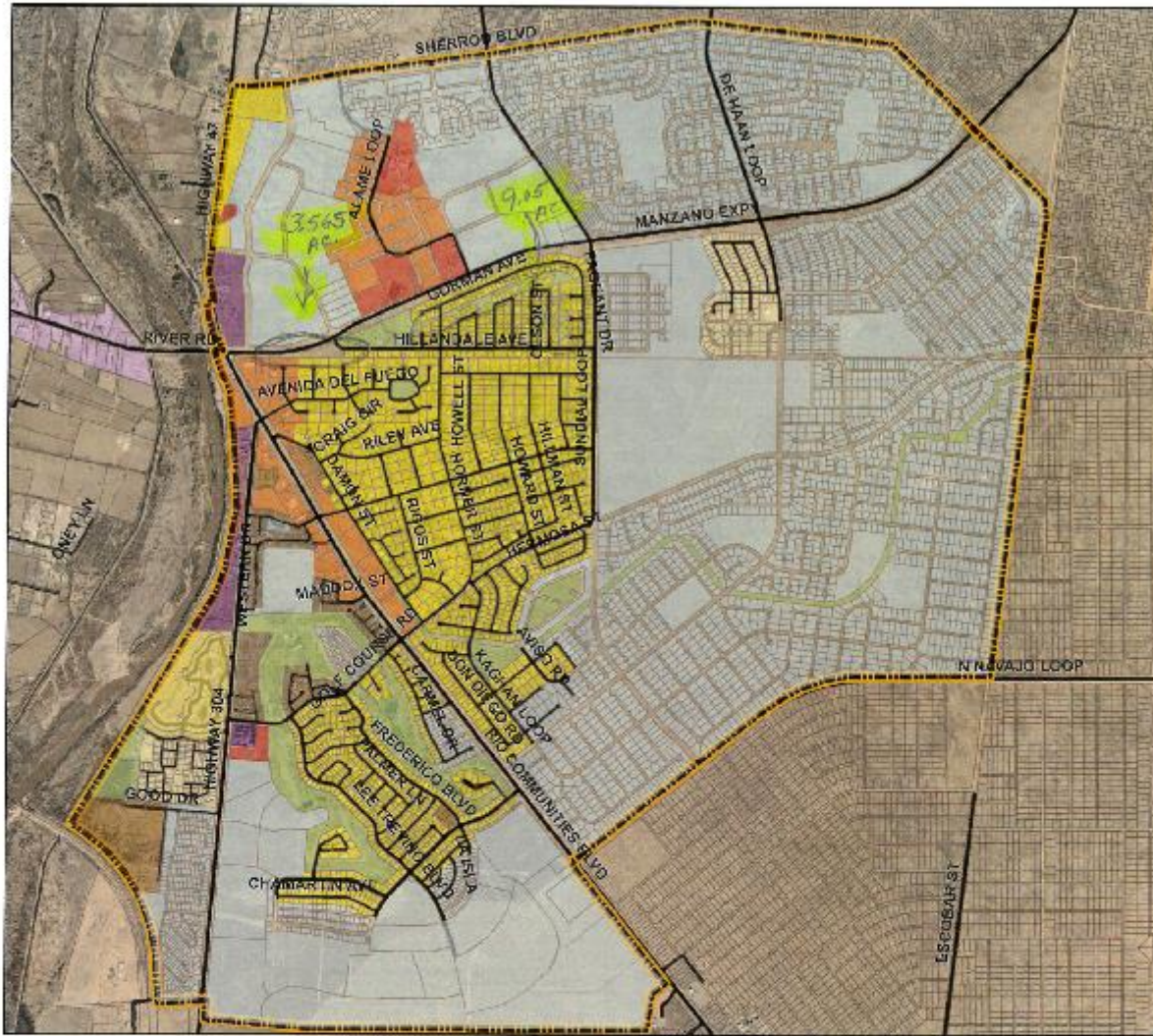
REPLAT OF LOT 1 IN BLOCK 13 OF ENCHANTED MESA
 ADDITION, UNIT 3 AND PLAT OF
UNIT 4
 OF
ENCHANTED MESA
 A SUBDIVISION IN THE TOMÉ GRANT
 VALENCIA COUNTY, NEW MEXICO
 SHEET 1 OF 1 SHEETS



①
 EXHIBITION STATION
 COMMUNITY CENTER
 TIMAN PARK

BY COUNTY ENGINEER
 ENRIQUE GARCIA
 10/15/2010
 10/15/2010
 10/15/2010

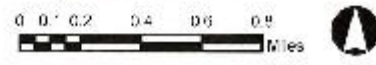
GOSHAWK AVE



City of Rio Communities

Zoning Map

201908220714



This map is a preliminary map and is not intended to be used for legal purposes. It is subject to change without notice. The City of Rio Communities is not responsible for any errors or omissions on this map.