

City of Rio Communities,  
Resolution 2016-56- A proposal to  
participate in the NMDOT  
Cooperative Agreement Program  
for the express purpose of  
repairing city roads and  
intersections.

# **2016-Road Paving Improvements**

**City of Rio Communities , New  
Mexico**

Prepared by: Rio Communities' Planning  
and Zoning Commission

---



## **CITY OF RIO COMMUNITIES**

360 Rio Communities Blvd.  
PO Box 565  
Rio Communities, NM 87002  
505-861-6803  
[www.riocommunities.net](http://www.riocommunities.net)

---

February 23, 2016

Mr. Rick Garza  
LGRF Liaison  
NMDOT, District 3  
PO Box 91750  
Albuquerque, New Mexico 87199-1750

RE: 2016-2017 Cooperative Agreement Program Project Proposal

Dear Mr. Garza,

As a newly incorporated entity, the City of Rio Communities is please to present its first application for funding under the Cooperative Agreement Program for 2016-2017. This proposal was prepared by members of our Planning and Zoning Commission, who conducted exhaustive site inspections, and performed a thorough analysis of road use and conditions.

Following are aerial photographs depicting specific projects locations, many of which are located alone established school bus routes; descriptions of each scope of work, along with cost estimates for each roadway improvement. Additionally, Resolution 2016-56 is attached certifying full acceptance of this project by our Governing Body.

As City Manager, I hereby certify that the enclosed proposed scope of work is necessary for the public good and their convenience, and integral to the economic development of our community.

Should you have further concerns or question, please contact me, at 859-1789.

Thank-you in advance for your assistance in our efforts to improve our community.

Sincerely,

Bob Skerry  
Rio Communities City Manager

**State of New Mexico  
City of Rio Communities**

**Resolution 2016-56  
NMDOT Cooperative Agreement Program**

- WHEREAS,** The governing body in and for the City of Rio Communities, State of New Mexico, desires to participate in the Cooperative Agreement Program and has approved the scope and locations of the work in the attached document; listing roads and intersections, along with a preliminary cost estimate, and;
- WHEREAS,** The official meetings for the review of said documents were duly advertised in compliance with the State Open Meetings act, and Resolution 2015-50, and;
- WHEREAS,** The scope of work contained herein has been reviewed by the City Council as being vital to the public good and their convenience, and;
- WHEREAS,** The City of Rio Communities is responding to invitation from the New Mexico Highway and Transportation Department, District Three, Albuquerque, New Mexico, to participate in the 2016-2017 Cooperative Agreement Funding Program by submitting the following project proposal, and;
- WHEREAS,** The City of Rio Communities has budgeted for and agreed to provide matching funds at a rate of twenty-five percent (25%) of the total cost of the project.

**NOW THEREFORE, BE IT HEREBY RESOLVED** that the Governing Body of the City of Rio Communities, State of New Mexico, hereby authorizes the submission of an application to the New Mexico State Highway and Transportation Department, and does hereby commit to the funding of such projects as specified in the application

APPROVED, PASSED AND ADOPTED BY THE GOVERNING BODY OF THE CITY OF RIO COMMUNITIES ON THIS 23rd DAY OF FEBRUARY 2016.

**City of Rio Communities Governing Body**

\_\_\_\_\_  
Mark Gwinn, Mayor

\_\_\_\_\_  
Mary Lee Serna, Councilor/Mayor Pro Tem

\_\_\_\_\_  
Robert Chavez, Councilor

\_\_\_\_\_  
Margaret (Peggy) Gutjahr, Councilor  
ATTEST:

\_\_\_\_\_  
Frank Stasi, Councilor

\_\_\_\_\_  
Elizabeth (Lisa) Adair, Municipal Clerk

**City of Rio Communities  
2016-2017 Cooperative Agreement Road Improvements  
Cost Estimates**

Item	Bus Stop	Project Description	Unit	Qty	Unit Cost	Total
<b>1</b>		<b>Intersection: McKnight and Damon</b>				
	<b>Yes</b>	Total recondition (full-depth repair)	SF	6200	\$7.00	\$43,400.00
<b>2</b>		<b>Intersection : Horner, Kaghan, &amp; Suncrest</b>				
	<b>Yes</b>	Partial recondition (full-depth repair)	SF	9500	\$7.00	\$66,500.00
<b>3</b>		<b>Intersection: Guapo &amp; Kaghan Loop</b>				
	<b>Yes</b>	Total recondition (full-depth repair)	SF	2000	\$7.00	\$14,000.00
<b>4</b>		<b>Intersection: Guapo &amp; Aviso Street</b>				
	<b>No</b>	Partial recondition (full-depth repair)	SF	3000	\$7.00	\$21,000.00
<b>5</b>		<b>Intersection: Kaghan Loop &amp; Dulcinea Lane</b>				
	<b>Yes</b>	Partial recondition (full-depth repair)	SF	1500	\$7.00	\$10,500.00
<b>6</b>		<b>Intersection: Goodman &amp; Hillman Avenue</b>				
	<b>Yes</b>	Partial recondition (full-depth repair)	SF	1600	\$7.00	\$11,200.00
<b>7</b>		<b>Intersection: Frederico &amp; Unitas Court</b>				
	<b>Yes</b>	Total recondition (full-depth repair)	SF	1000	\$7.00	\$7,000.00
<b>8</b>		<b>Intersection: Palmer Lane &amp; Blanda Court</b>				
	<b>No</b>	Partial recondition (full-depth repair)	SF	2200	\$7.00	\$15,400.00
<b>9</b>		<b>Intersection: Nancy Lopez &amp; Arnold Palmer Loop</b>				
	<b>Yes</b>	Partial recondition (full-depth repair)	SF	1700	\$7.00	\$11,900.00
<b>10</b>		<b>Intersection: Palmer Lane &amp; Player Court</b>				
	<b>No</b>	Total recondition (full-depth repair)	SF	1000	\$7.00	\$7,000.00
<b>11</b>		<b>Intersection: Frederico &amp; Golf Course Road</b>				
	<b>Yes</b>	Partial recondition (full-depth repair)	SF	600	\$7.00	\$4,200.00
<b>12</b>		<b>McDougal Ave.: Spot Repair</b>				
	<b>No</b>	Total recondition (full-depth repair)	SF	450	\$7.00	\$3,150.00
<b>13</b>		<b>Goodman Ave.: Entire Length of Road</b>				
	<b>Yes</b>	Patch Potholes & Chip Seal	SF	4650	\$6.45	\$29,992.50
<b>TOTAL</b>					<b>\$245,242.50</b>	

**City Of Rio Communities  
Index of Site Locations**

**Site Map: Intersections East of Highway 47 .....5**

- 1. McKnight and Damon .....6**
- 2. Horner, Kaghan and Suncrest .....7**
- 3. Guapo and Kaghan Loop .....8**
- 4. Guapo and Aviso .....9**
- 5. Kaghan Loop and Dulcinea Lane .....10**
- 6. Goodman and Hillman Avenue .....11**

**Site Map: Intersections West of Highway 47.....12**

- 7. Frederico Blvd. and Unitas Court .....13**
- 8. Palmer Lane and Blanda Court .....14**
- 9. Nancy Lopez and Arnold Palmer Loop .....15**
- 10. Palmer Lane and Player Court .....16**
- 11. Frederico Blvd. and Golf Course Road .....17**

**Site Map: Roadway Repairs .....18**

- 12. McDougal Ave(section repair) .....19**
- 13. Goodman Ave. ....20**

## East Rio Communities: Site Locations



### Intersections East of Highway 47

1. McKnight and Damon
2. Horner, Kaghan and Suncrest
3. Guapo and Kaghan Loop
4. Guapo and Aviso
5. Kaghan Loop and Dulcinea Lane



## 6. Goodman and Hillman Ave.



### Repair #1 Intersection of McKnight Place and Damon Street



**Assessment:** Complete breakdown of asphalt and base course.

**Paser Rating 1:** Complete failure of road surface; showing severe distress with extensive loss of surface integrity.



**Area:** 6,200 SF

**Repair:** Total recondition (full-depth repair)

**Scope of Work:** Mark and saw-cut area of repair; jackhammer and remove defective material; remove, replace and compact base course; apply tack coat; place hot-asphalt patch material in two 1.5-inch lifts, compacting after each lift; seal the patch with joint sealant material.



## Repair #2

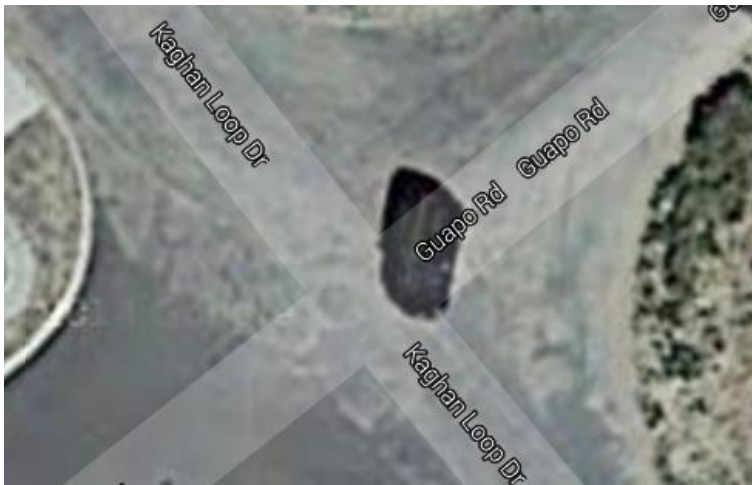
### Intersection of Horner, Kaghan & Suncrest



<b>Assessment:</b>	Severe deterioration of road surface.
<b>Paser Rating 2:</b>	Alligator and transverse cracking over 25% of road surface; sever distortions, repeated patching.
<b>Area:</b>	9,500 SF
<b>Repair:</b>	Partial recondition (full-depth repair)

**Scope of Work:** Mark and saw-cut area of repair; jackhammer and remove defective material remove, replace and compact base course; apply tack coat; place hot-asphalt patch material in two 1.5-inch lifts, compacting after each lift; seal the patch with joint sealant material.





## Repair #3 Intersection of Guapo and Kaghan Loop



North



<b>Assessment:</b>	Sever alligator cracking and potholes.
<b>Paser Rating 1:</b>	Sever distress with extensive loss of surface integrity.
<b>Area:</b>	2,000 SF
<b>Repair:</b>	Total recondition (full-depth repair)

**Scope of Work:** Mark and saw-cut area of repair; jackhammer and remove defective material remove, replace and compact base course; apply tack coat; place hot-asphalt patch material in two 1.5-inch lifts, compacting after each lift; seal the patch with joint sealant material.



## Repair #4 Intersection of Guapo and Aviso Street



<b>Assessment:</b>	Severe deterioration of road surface.
<b>Paser Rating 2:</b>	Sever distortion, and potholes
<b>Area:</b>	3,000 SF
<b>Repair:</b>	Partial recondition (full-depth repair)

**Scope of Work:** Mark and saw-cut area of repair; jackhammer and remove defective material remove, replace and compact base course; apply tack coat; place hot-asphalt patch material in two 1.5-inch lifts, compacting after each lift; seal the patch with joint sealant material.



## Repair #5

### Intersection of Kaghan Loop and Dulcinea Lane



**Assessment:** Sever deterioration of roadway surface and base course.

**Paser Rating 2:** Sever distortions, potholes and subsurface failure.

**Area:** 1,500 SF

**Repair:** Partial recondition (full-depth repair)

**Scope of Work:** Mark and saw-cut area of repair; jackhammer and remove defective material remove, replace and compact base course; apply tack coat; place hot-asphalt patch material in two 1.5-inch lifts, compacting after each lift; seal the patch with joint sealant material.





## Repair #6

### Intersection of Goodman and Hillman Avenue



- Assessment:** Sever road surface deterioration.
- Paser Rating 2:** Sever distortions, extensive patching and potholes.
- Area:** 1,600 SF
- Repair:** Partial recondition (full-depth repair)

**Scope of Work:** Mark and saw-cut area of repair; jackhammer and remove defective material remove, replace and compact base course; apply tack coat; place hot-asphalt patch material in two 1.5-inch lifts, compacting after each lift; seal the patch with joint sealant material.

## West Rio Communities: Site Locations



### Intersections West of Highway 47

- 7. Frederico Blvd. and Uritas Court
- 8. Palmer Lane and Blanda Court
- 9. Nancy Lopez and Arnold Palmer Loop
- 10. Palmer Lane and Player Court
- 11. Frederico Blvd. and Golf Course Road





## Repair #7

### Intersection of Frederico and Unitas Court



**Assessment:** Sever deterioration of surface and subbase.

**Paser Rating 1:** Sever distress, extensive alligator cracking, and extensive loss of surface integrity.

**Area:** 1,000 SF

**Repair:** Total recondition (full-depth repair)

**Scope of Work:** Mark and saw-cut area of repair; jackhammer and remove defective material remove, replace and compact base course; apply tack coat; place hot-asphalt patch material in two 1.5-inch lifts, compacting after each lift; seal the patch with joint sealant material.



## Repair #8

### Intersection of Palmer Lane and Blanda Court



North



**Assessment:** Sever road surface deterioration.

**Paser Rating 2:** Sever distortions, alligator cracking and potholes across entire road crossing.

**Area:** 2,200 SF

**Repair:** Partial recondition (full-depth repair)

**Scope of Work:** Mark and saw-cut area of repair; jackhammer and remove defective material remove, replace and compact base course; apply tack coat; place hot-asphalt patch material in two 1.5-inch lifts, compacting after each lift; seal the patch with joint sealant material.



## Repair #9

### Intersection of Nancy Lopez and Arnold Palmer Loop



- Assessment:** Sever distortion and road surface erosion.
- Paser Rating 2:** Alligator cracking and deterioration over 2" deep.
- Area:** 1,700 SF
- Repair:** Partial recondition (full-depth repair)

**Scope of Work:** Mark and saw-cut area of repair; jackhammer and remove defective material remove, replace and compact base course; apply tack coat; place hot-asphalt patch material in two 1.5-inch lifts, compacting after each lift; seal the patch with joint sealant material.





## Repair #10

### Intersection of Palmer Lane and Player Court



<b>Assessment:</b>	Sever deterioration of road surface and subbase.
<b>Paser Rating 2:</b>	Substantial alligator, and transverse cracking, and potholes.
<b>Area:</b>	1,000 SF
<b>Repair:</b>	Partial recondition (full-depth repair)

**Scope of Work:** Mark and saw-cut area of repair; jackhammer and remove defective material remove, replace and compact base course; apply tack coat; place hot-asphalt patch material in two 1.5-inch lifts, compacting after each lift; seal the patch with joint sealant material.



## Repair #11

### Intersection of Frederico and Golf Course Road



North



- Assessment:** Sever surface deteriorations.
- Paser Rating 2:** Sever distortions over 2" deep and alligator cracking.
- Area:** 600 SF
- Repair:** Partial recondition (full-depth repair)

**Scope of Work:** Mark and saw-cut area of repair; jackhammer and remove defective material remove, replace and compact base course; apply tack coat; place hot-asphalt patch material in two 1.5-inch lifts, compacting after each lift; seal the patch with joint sealant material.



## Rio Communities: Road Repairs Site Locations



- 12. McDougal Ave. (450 SF section)**
- 13. Goodman Ave. (.88 miles)**

# Repair #12

## McDougal Ave. Section Repair



**Assessment:** Significant surface, base and roadway edge deterioration with rutting to north side of road only.



**Paser Rating 1:** Sever distress with extensive loss of surface integrity.

**Area:** 450 SF

**Repair:** Total Recondition (full-depth repair)

**Scope of Work:** Mark and saw-cut area of repair; jackhammer and remove defective material remove, replace and compact base course; apply tack coat; place hot-asphalt patch material in two 1.5-inch lifts, compacting after each lift; seal the patch with joint sealant material.



# Repair #13

Goodman: Entire Length of Road (.88 miles)



## Assessment:

Moderate road surface deterioration.

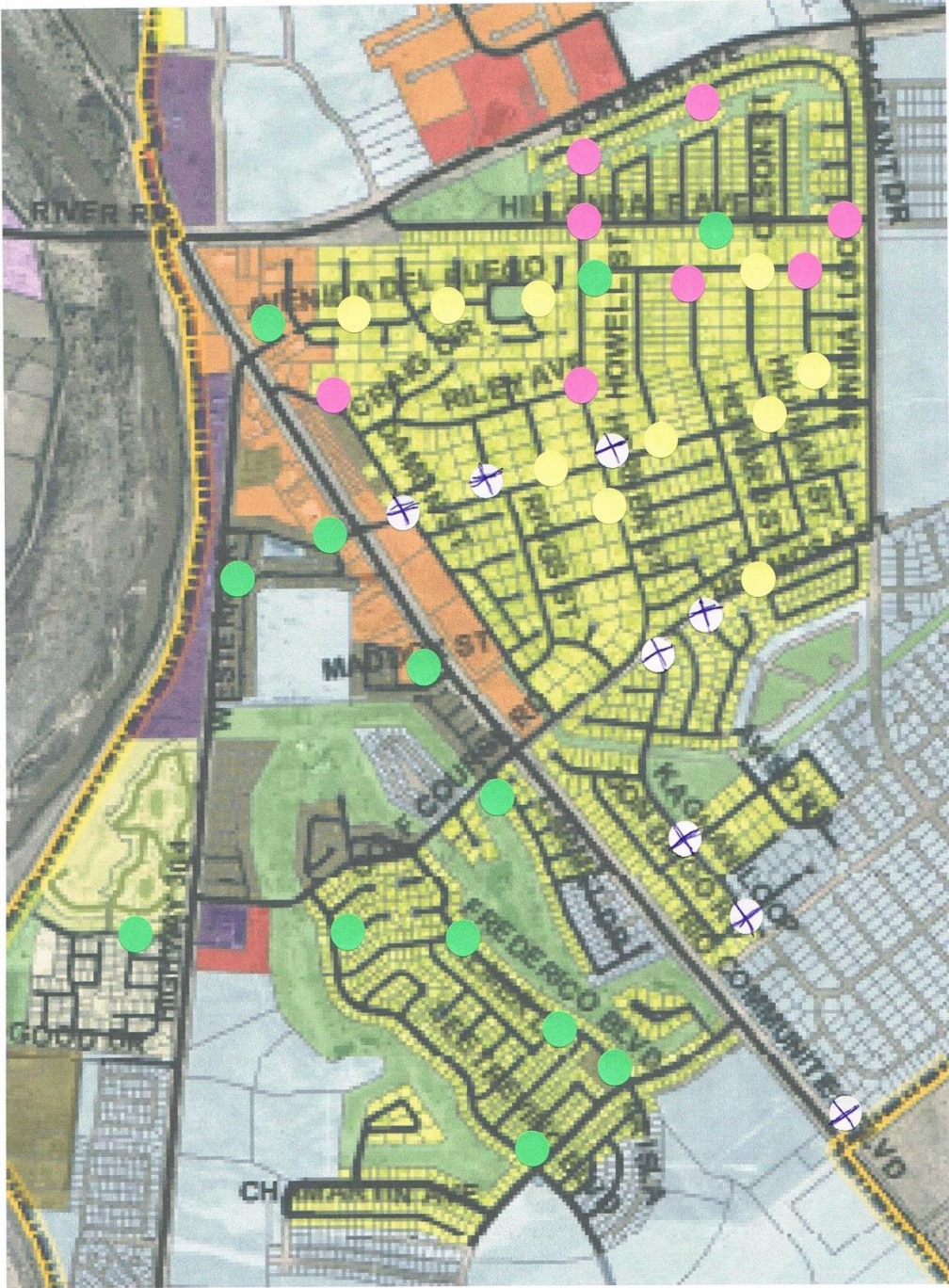
**Paser Rating 3:** Longitudinal and transverse cracking interspersed with rutting and patches in poor repair.

**Area:** 4,650 LF (.88 miles)

**Repair:** Systematic patching as required and chip seal over entire length of road surface.

**Scope of Work:** Evenly distribute a thin base of hot bitumen seal spray over existing pavement; evenly distribute and embed finely graded aggregate, and roll to smooth pavement surface.





LA MERCED area Elementary Run:  
2809 – Amy- Leave Compound at 7:50 a.m.

109 Avenida Del Fuego
224 Sombrero Lp
Avenida Del Fuego & Largo Pl
Goodman & Doering
Suncrest & Calle Del Sol
Horner & Baldwin
Goodman & Howell
Goodman & Hillman
213 Hill St
338 Goddard

2810 – Leave Compound at 6:30 a.m.

Gorman & Horner
329 Gorman
Hillandale & Pageant
Hillandale & Horner
Howard & Goddard
Goddard & Hill
Horner & Riley
Damon & Damon Pl

2814 – Julia – Leave Compound at 6:25 a.m.

Avenida Del Fuego
2296 Hwy 304
Rio Community Way Apt
Hwy 47 & Maddox
Golf Course & Carmel
Frederico & Brown
Frederico & Nancy Lopez
Nancy Lopez & Lee Trevino Dr
Lee Trevino Dr & Tommy Armour Ct
Vista Llanos & Vista Sandia
Hwy 304 & Horizon Vista

2815 - Quirina – Leave Compound at 5:?? a.m.

Dove & Hwy 47	not in city
Hwy 47 & Navajo	
183 Balsam Cr (PM only)	not in city
37 Mallette	not in city
Mallette & Palomas	not in city
Manzanita & Subir Lp	not in city
Kaghan & Don Diego	
Kaghan & Guapo	
Kaghan & Suncrest	
Suncrest & Howard	
Goodman & Horner	
Goodman & Riggs	
Goodman & Damon	